

# G.T.POWER®

## Bluetooth Version RC Car Sounds/Lights Simulated System Manual.



Thanks for purchasing the G.T. POWER Bluetooth Version RC Car Sounds/Lights Simulated System. This product has a powerful sound synthesizer unit and high-efficiency power amplifier, combined with an optimized acoustic design speaker, giving you a fantastic and perfect simulated sounds/lights effect. This product, with its own APP program, allows you to set its parameters, adjust lighting effects, and select the engine sound etc. through a mobile phone. Please read the manual completely and carefully before using.



Scan the QR code to install the App of Bluetooth Version RC Car Sounds/Lights Simulated System

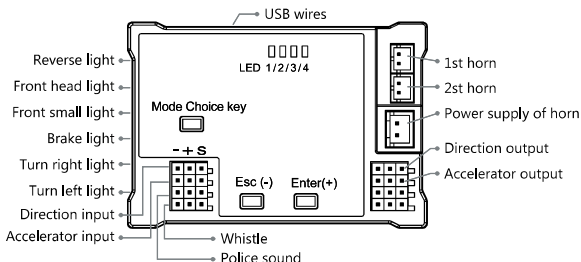
## 1. Product List

1. Control module of the Bluetooth version Car Sounds/Lights Simulated System:	x 1pcs	6. 5mm white LED:	x 2pcs
2. Speaker:	x 1pcs	3mm white LED:	x 1pcs
3. Receiver cable:	x 4pcs	5mm red LED:	x 1pcs
4. MicroUSB data cable:	x 1pcs	3mm yellow LED:	x 2pcs
5. Power cable:	x 1pcs	7. Accessory bag:	x 1pcs
		8. 3M double-sided adhesive tape:	x 2pcs
		9. Manual sheet:	x 1pcs

## 2. Specification

1. Input voltage: 4.5V-6V, Speaker input voltage: 6-26V
2. Audio Output Power: Max 10W
3. Speaker size: 80\*57\*30mm (line length 25cm)
4. Control board size: 66.3\*44\*14.8mm

## 3. Connecting Instruction



### USB UP:

#### Left: Input signal Channel

(From up to down)

- 1、Direction Channel
- 2、Throttle Channel
- 3、Police sound
- 4、Whistle

#### Right: Output signal Channel

(From up to down)

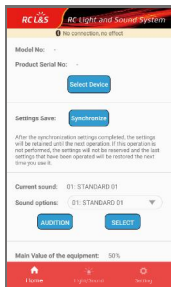
- 1、Direction Channel
- 2、Throttle Channel

## 4. Operation Cautions

- Installation and power supply should be carried out in strict accordance with the connection mode specified in the instructions, and the installation should be stable and safe.
- Low voltage alarm: The first and the third LED will flash when sound box voltage lower than 6V, it means both the blue LED and red LED will flash.
- Never cover the speaker vibration module, and keep it well ventilated
- Keep the speaker volume to the lowest before start up or restart, to avoid damage to the speaker.
- Please don't put strong magnetic and interference objects around the speaker.
- The unit must be calibrated by remote controller when use it at the first time or replacing a new remote controller.

## 5. APP Setting

This product communicates through Bluetooth, you can through download the APP to set parameters on mobile phone. This is easy to operate and largely increased user experience.



### Device Selection:

Searching for Bluetooth device, and then connect to Bluetooth.

### Synchronization settings:

After synchronization setting completed, the settings will be retained until the next power-on. If this operation is not performed, the settings will not reserved, and will implement the latest synchronization settings.

### Sound effects selection:

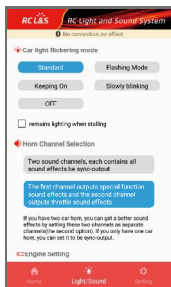
You can choose a set of sound effect to audition 5-10 seconds from the No. 01-58 different sound effects, and then you can determine the sound effects you need.

### Selection:

Confirm the sound effect you needed.

### Total volume of the equipment:

drag the scroll bar to set the volume.

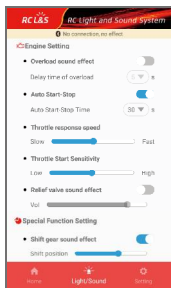


### Car light flashing mode selection:

Choose one from the total 5 kinds flashing mode.

### Speaker channel selection:

There are two speaker channels in this product. You can set to output the same sound effects for both of the channels. Or you can set second channel to output sound effects such as engine sound effect etc., the other speaker channel output special function sound effects, such as police car sound effect, whistle sound effect etc. The third channel of the remote controller push forward to the maximum is open the police car sound effect, push backward to the maximum is turning on the whistle sound effect.



### ▼ Engine settings:

#### Overload sound effect setting:

can turn on or turn off.

#### Overload delay time:

you have 1-10 seconds to choose and confirm.

#### Auto start/stop setting:

can turn on or turn off.

#### Auto start/stop time:

you have 5-200 seconds to choose and confirm. After you starting up the sound system, if the throttle on the neutral status, the vehicle is stationary and the engine is at idle state, then when you open the automatic start-stop system, the engine will automatically shut down when delayed to the set time. The engine will restart only when you touch the throttle again, you can also choose to shut down the system. No matter in any state, the sound system will work all

the time when the engine is start up.

#### Throttle response speed:

drag the scroll bar to set the speed.

#### Throttle Start Sensitivity:

Drag the scroll bar to set the height.

#### Pressure relief valve sound effect:

can turn on and turn off.

#### Volume:

drag the scroll bar to set the volume

### ▼ Special function settings:

#### Shift sound effects:

can turn on an turn off.

#### Shift position settings:

drag the scroll bar to set the shift position

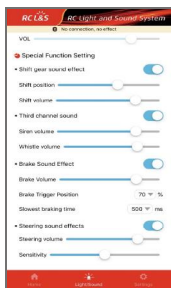
#### Shift volume:

drag the scroll bar to set the shift volume

#### The third channel sound setting:

can turn on and turn off

#### Siren sound volume:



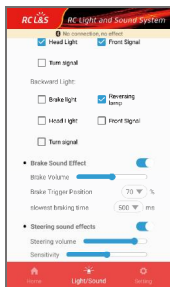
drag the scroll bar to set the siren sound volume.

**Whistle volume:**

drag the scroll bar to set the whistle volume

**The fourth channel light switch:**

can turn on and turn off.



**Brake sound effect:**

can turn on and turn off.

**Brake volume:**

drag the scroll bar to set the brake volume

**Brake trigger position:**

When braking, the percentage of the throttle move from the medium position to the smallest position. 100% is the brake trigger position as well as the smallest position of the throttle. There are 50% to 100% to choose and confirm.

**The slowest brake time:**

The slowest brake time is the time interval move forward throttle to brake trigger position. There have 400-1500ms to choose and confirm.

**Turning sound effect:**

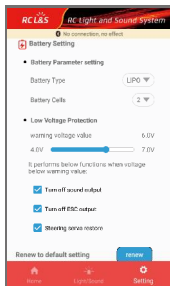
can turn on and turn off.

**turning volume:**

drag the scroll bar to set the volume

**Sensitivity:**

Drag the scroll bar to set the sensitivity



**▼ Battery settings:**

**Battery type:**

Speaker supports battery types: LiPo, LiFe, NiMH/NiCD. Speaker supports battery knobs: LiPo/ LiFe: 2-6S; NiMH: 5-14S

**low voltage protection:**

Alarm voltage value: Drag the scroll bar to set the volume. It has 4-7V to choose. When the alarm voltage is set at 6V and the power supply voltage of the speaker is lower than 6V, the product will emit an alarm sound of "buzzing", and then the first blue LED and the third red LED on the product will flash.

**Restore default settings:**

product restores to factory settings.

## 6. LED Status

Car Status \ LED Status	Reverse light	Front head light	Front small light	Brake Light	Turn right light	Turn left light
Stop	○	●	●	◐	○	○
Forward	○	●	●	◐	○	○
Go forward and turn left	○	●	●	◐	○	◌
Go forward and turn right	○	●	●	◐	◌	○
Go backwards and turn left	●	○	◐	◐	○	◌
Go backwards and turn right	●	○	◐	◐	◌	○
Reverse	●	○	◐	◐	○	○
Brake	○	○	◐	●	○	○

● 100% Brightness   ◐ 50% Brightness   ◌ Flashing   ○ OFF

## 7. Operating Method

### 1. Normal mode:

- Under normal light mode, When power on, the engine is at idle state and the throttle is in the neutral position, the first LED flashing, indicate working normal.
- Push the throttle forward, the engine starts and will emit a sound matching the engine speed according to the throttle signal size. At the same time, the LED on the product will synchronously display the current engine speed status. When two blue and two red LED light on at the same time, indicating that the throttle has reached the highest speed and the engine is in the highest speed state.
- When the speaker emit engine sound, short press "ENTER" button (+) to increase volume, short press "ESC" button (-) to decrease volume.
- When the throttle is in neutral position, after 5 seconds, the engine will automatically shut down within the time range of automatic start-stop setting.

### 2. Calibration mode:

- Long press "enter" key till hear one long beep sound, LED1 lighting constantly, enter into calibration mode.
- After LED1 lighting constantly, push the throttle pole to the neutral position, short press "ENTER" key, LED2 lighting constantly, finish the neutral position setting.
- After the LED2 lighting constantly, push the throttle to the forward maximum position, then short press "Enter" key, LED3 lighting constantly, finish the forward throttle maximum position calibration.
- After the LED3 lighting constantly, push the throttle to the maximum reversing position, then short press "Enter" key, LED4 lighting constantly.
- If all the above calibration finished, the speaker will emit a beep sound. If the calibration failed, you will hear three continuous beep sounds.

- In any case under the calibration mode, it can stop calibration mode and enter into normal mode by long press "ESC" mode. The speaker will emit 3 continuous beep sound.

### **3. USB mode:**

This product supports USB upgrade firmware and sound files. When the product is powered off, hold down the mode selection key and connect the USB cable to the computer. The second blue LED lights constantly. Open the update computer software and select the latest firmware or sound file to download and start updating. The blue indicator LED flashes during the update process, and the red indicator LED lights constantly after update completed. Restart the sound system after the update is completed. If update failed, according to the above instructions update again. The latest firmware and sound files can be accessed at any time on the website.

Hold down mode select key, and then connect USB cable to the computer can only upgrade firmware. Do not hold down any key, just connect USB cable to the computer can update sound files. Please double confirm!

### **4. Sounds selecting setting:**

Under normal mode, it will enter into the sounds selecting mode after long press "Mode" key, then the speaker will beep two times and the two red LED will flash two times. After playing the current pre-listening sound effect, press "ENTER" key (+) or "ESC" key (-) to choose the sound effects you needed. For each selected sound data, the group number of the sound data will be reported in advance. And the LED prompts the current group number (total four LED lights, two lighting modes, flashing and constantly light, combined to total 8 sets of the engine simulated sound), and then plays the audition effect of the sound data. Then press the mode selection key till the speaker emits a long "beep" sound and two red LED, two blue LED lights turn on and off in turn. confirm and withdraw the sound selection mode. Sound effects can be selected through the Bluetooth function of mobile phone APP. At present, there are only 58 sets of sound data.

## 8. Warranty and Service

We warrant this product for a period of one year(12 months)from the date of purchase. The guarantee applies only to such material or operational defects, which are present at the time of purchasing the product. During that period, we will replace without service charge any product deemed defective due to those causes. You will be required to present a proof of purchase(invoice or receipt). This warranty does not cover the damage due to wear, overloading, improper handling or using of incorrect accessories.



MADE IN CHINA